



47 Haining Gardens

Mytchett, GU16 6BJ

Asking Price £400,000

This well-presented three-bedroom semi-detached home is situated on a popular development in the heart of Mytchett village.

The property offers a spacious living room, separate dining area open and a modern fitted kitchen, giving direct access to a south-facing garden with a large decked space. Upstairs there are three bedrooms, including a master with fitted wardrobes, and a refitted bathroom.

Additional benefits include: Off-road parking and single garage along with Gas central heating and double glazing

Located close to local shops and amenities, the property provides excellent transport links via Junction 4 of the M3, Farnborough and Ash Vale mainline stations. The Basingstoke Canal and Frimley Lodge Park are also nearby.

- Superb South facing garden
- Garage and Driveway
- 3 Bedrooms
- Lounge and Dining room
- Updated Kitchen and bathroom
- Gas central heating
- Double glazed
- Cul de sac location
- Council tax band D
- EPC energy rating band (c) 72

Viewing

Please contact our Fosters Sales Office on 01252 344333 if you wish to arrange a viewing appointment for this property or require further information.



3



1

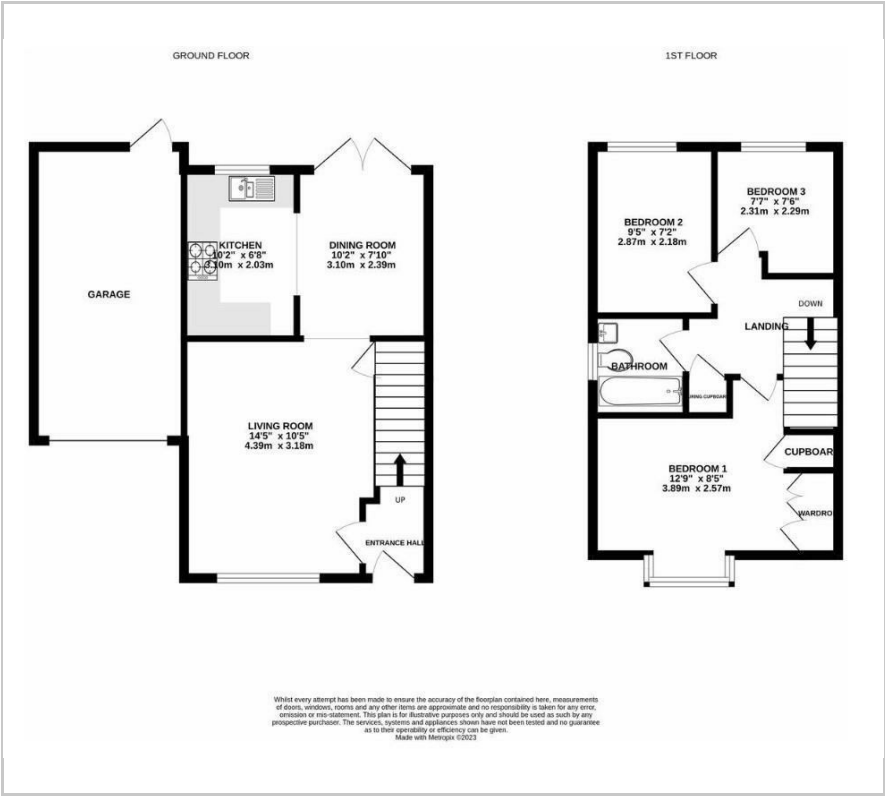


2



C

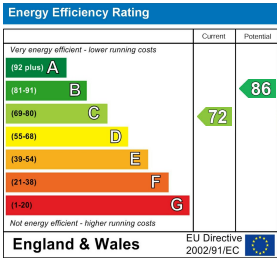
Floor Plan



Area Map



Energy Efficiency Graph



These particulars, whilst believed to be accurate are set out as a general outline only for guidance and do not constitute any part of an offer or contract. Intending purchasers should not rely on them as statements of representation of fact, but must satisfy themselves by inspection or otherwise as to their accuracy. No person in this firms employment has the authority to make or give any representation or warranty in respect of the property.